



CONNECTION

PIEDMONT ELECTRIC MEMBERSHIP CORPORATION MEMBER NEWSLETTER | MARCH 2019

Plant the seeds for an energy-efficient spring

The ground is beginning to thaw, the birds are chirping and the sun is setting a little later each day; spring is just around the corner! With the weather changing, it's important to remember that your energy habits should change as well. Here are a few actions you can take to save energy (and money) during the new season:

Use your blinds.

Window treatments such as blinds or shades provide protection from sunlight that causes heat to build up in your home. These treatments allow you to reduce the need to run your air conditioner and lower your energy use.

Swap out filters.

Change the air filters in your home to help your system run more efficiently. We recommend doing this once a month.

Fire up the grill.

Cook dinner outside on the grill on pleasant evenings instead of using your oven.

Turn on the fan.

During the warmer days of spring, set your ceiling fan to turn counterclockwise and turn it on instead of your air conditioner. Just remember that fans cool people, not rooms. Fans should be turned off when you leave the room to save energy.

Turn off and unplug.

Unplug devices when they aren't in use. Electronics and appliances still

use electricity when they're off, just by being plugged into the wall. Try using a power strip to make it easy to unplug multiple devices at one time.

Take it outside.

The more time you spend outside, the less energy you're using at home. Taking advantage of the beautiful spring weather is a win-win.

Reset your thermostat.

If you have a programmable thermostat, make sure you update the schedule to fit the milder weather. Plus, if you have a Nest or Ecobee smart thermostat, you can save even more with our smart thermostat savings program. (Check out pages 26 and 27 to learn more!)

Get advice from an expert.

Schedule a free home energy analysis with one of our energy specialists to get a thorough review of efficiency improvements that can be made around your home.

Visit pemc.coop/save-energy-money for more information on how to save on your monthly bill.

IMPORTANT DATES

March 31

Basketball camp applications due

College scholarship applications due

April 12

Annual meeting

April 19

Good Friday

Our offices will be closed and employees will be on call.

26 **Stop and smell the savings**

28 **Spring planting guide + 811 call before you dig**

March right-of-way maintenance

CASWELL COUNTY

Cherry Grove Road
Hwy 62 N
Badgett Sisters Parkway
Marshall Graves Road
NC Hwy 119 N
Burton Chapel Road
Rascoe Dameron Road



Stop and smell the savings

Spring into action with a smarter way to save money during the year! We offer a special program packed with savings for members who own a Nest or Ecobee smart thermostat. This program allows Piedmont Electric to adjust your thermostat by a few degrees on hot afternoons, which helps us to reduce our peak load. Members always have the final say in their home temperature and can adjust their thermostat back at any time!

Proven energy savings



A smart thermostat helps to decrease your bill by learning your schedule and adjusting your temperature to an energy-efficient setting. You can control your thermostat anywhere on your smartphone or computer.



\$50 rebate

Receive a \$50 initial rebate and monthly bill credits from June through September when you sign up for our smart thermostat savings program.



Help keep rates low!

When we work together to reduce energy use on the hottest days in the summer, it helps us keep rates low for everyone.

To sign up today, register your Nest or Ecobee smart thermostat on their websites at either nest.com or ecobee.com. For more information, visit pemc.coop/thermostat.



Piedmont Electric's

**Smart Thermostat
Savings Program**





Don't just take our word for it. One of our members shared their experience as a participant in the smart thermostat savings program:

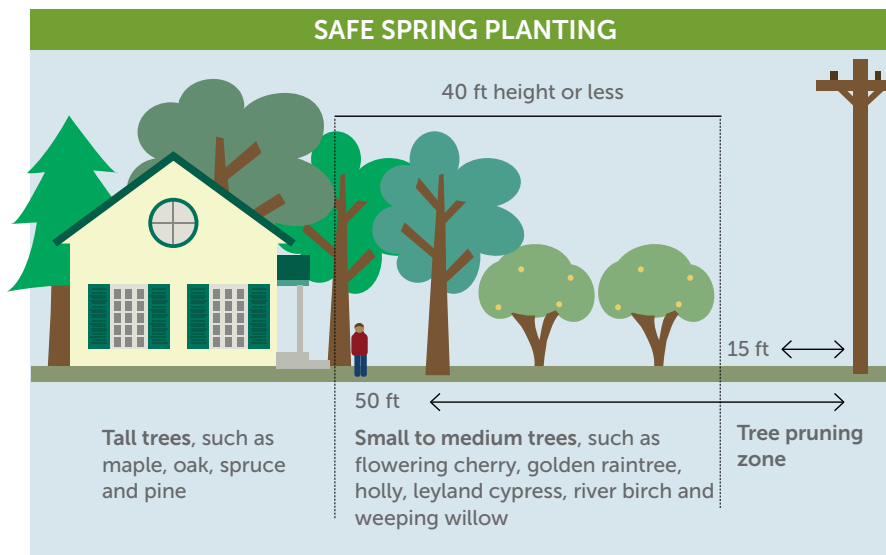
"We were very pleased with the smart thermostat savings program last summer. We received plenty of advanced notice for the adjustment and it happened automatically. We barely noticed a difference in the house during the 'rush hours' and we were happy to get the credits on our bill."

— Adam L. of Chapel Hill, Piedmont Electric member



Spring planting guide + 811 call before you dig

This month marks the beginning of spring and with warmer weather on the horizon, now is the time to begin planting and landscaping. As a member of our co-op, we want to provide you with valuable information to help guide your planting so that you can avoid running into safety issues with power lines, both above and below ground.



There are a couple things to keep in mind when planting that will help your co-op with right-of-way issues and keep you and your loved ones safe.

Above ground: Trees and shrubs can grow into overhead power lines. This means that planning before you plant is critical. Take a look at our graphic (above) explaining safe planting distances for certain plant heights.

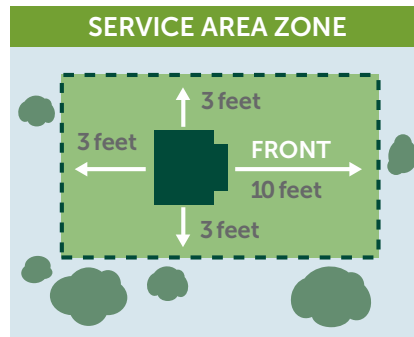
Below ground: Root growth can affect underground power lines. If you have a pad-mount transformer in your yard, it's crucial to plant a safe distance from this green metal box. Take a look at our graphic (right) explaining safe planting distances from your pad-mount transformer.

Also, with lines potentially running under your property, it's a law to call 811 before you dig to ensure your

safety and the safety of those around you. Follow these simple steps:

1. Call 811 a couple days before you plan to dig.
2. Inform the operator of where you plan to dig.
3. Wait a few days for a locator to be sent to mark the location of your underground lines.

Following all these tips can help both you and your co-op transition into this beautiful spring season safely. For more information on right-of-way and safe planting from our right-of-way supervisor, go to pemc.coop/planting-guide.



PIEDMONT ELECTRIC CONNECTION

Published monthly for the members of Piedmont Electric Membership Corporation

2500 NC Highway 86 South
PO Drawer 1179
Hillsborough, NC 27278

OFFICE HOURS

Monday–Friday, 8 a.m.–5 p.m.
800.222.3107

Piedmont Electric is an equal opportunity provider and employer.

Stephen B. Hamlin
President and CEO

DIRECTORS

Bill R. Barber, Chairman
Paul L. Bailey, Vice Chairman
Sam T. Woods, Secretary
Richal Vanhook, Treasurer
J. Randy Kinley, Stephen C. Long, David Poythress, Cyrus Vernon & Talmadge W. Yancey

IF YOUR POWER GOES OUT, CALL US OR TEXT US AT 800.222.3107

Opt in for text alerts by texting "pemc" to 800.222.3107. Once you've opted in, report an outage by texting "#out" to 800.222.3107.

Our automated outage reporting system uses your phone number to determine your service location. Update the number connected to your account by completing the form that comes with your monthly bill or by calling 800.222.3107.

Pay account and access account information by phone 24 hours a day by calling 800.222.3107. Voice instructions will direct you through the system.